

**M-SERIES FLYBRIDGE
MOTOR YACHTS**

Martimo[®]







OCEANS APART

From the island continent of Australia, a Maritimo is born into a coastline measuring over 32,000 nautical miles in length. The perfect testing grounds for the world's true long-range luxury motor yacht builder.

Experience a collection of luxury motor yachts that are without peer, luxury motor yachts that are truly oceans apart.

Maritimo®

CRAFTING DREAMS

Founded by Australia's most awarded boat builder, Bill Barry Cotter. Crafting motor yachts of the highest quality for the world has been a life-long passion that has encapsulated him for 60 years of his life.

Maritimo will never submit to the status quo. As innovators, we challenge conventional wisdom to materialise new ideas. We see every detail as an opportunity for excellence.

The result is a place where motor yachts of the most superior quality, and capability are born, a place of crafting dreams.

Maritimo®







Maritimo

LONG RANGE LUXURY MOTOR YACHTS



RACEBRED TECHNOLOGY

Whether at 130 Knots or 30 Knots, there is no such thing as over engineering.

With an esteemed heritage in offshore racing, every Maritimo is infused with the technological advancements, responsive performance and dependable engineering derived from experience in competition.

Maritimo's pedigree is unmatched, as the only luxury motor yacht manufacturer internationally, with dedicated factory racing division.



EXPERIENCE THE MARITIMO M-SERIES

The ultimate concept in long range cruising, performance and design the M-Series flybridge motor yacht range sets the global standard in comfort and protection. Unrivalled as the worlds leading ocean going passage maker, with long range capacity and ocean proven endurance.

Featuring a climate controlled, fully enclosed flybridge sky lounge with internal staircase access, and Maritimo trademark direct shaft technology, the M-Series delivers outstanding performance in any condition.

Maritimo®









M70

THE LEADER OF THE FLEET

The Maritimo M70 is the flagship expression of our flybridge motor yacht range. Its DNA echoes the culmination of all iconic M Series models of its lineage.

It is the embodiment of faultless form and formidable function, the beating heart of Maritimo.

Superbly balanced, the flowing hull form and purposeful contours create a majestic stance, a subtle suggestion to the power and comfort within.

A LIFE WITHOUT LIMITS

The M70 does not compromise. Power and strength meld with refined luxury and unhindered range, so once the lines are free, the destinations and duration are limitless.

The latest evolutionary step raises the bar once again. Balance, efficiency and comfort, even in demanding conditions, have reached new heights, so every journey is a feast for the inner urge to explore.









THE MOST MAJESTIC HOST

At Maritimo, the beauty of the finished motor yacht is made possible only by the dedication to perfection applied at every stage of its creation.

Only through experiencing it for yourself do you feel the quality and sense the soul within. That is the Maritimo way; the reassuring sensation that when you sit inside the M70 you are part of something truly special.



EXQUISITE DETAIL. UNSPOKEN QUALITY.

Maritimo is built around an obsession with attention to detail. A highly skilled workforce creates each M70 with knowledge acquired and honed over generations. Each pair of hands that touch the craft on its journey to completion is energised by a common determination to create the most beautiful motor yachts in the world.









ASCEND TO A WORLD OF LUXURY

Ascend the internal staircase to the flybridge sky lounge and surround yourself with panoramic vistas, that can be shared with those close.

Define every journey as you cruise, entertain, or relax in climate-controlled comfort.





M70 SPECIFICATIONS

| | | |
|------------------------------|-------------------------------|--------------|
| LENGTH OVERALL | 21.51 M | 70' 7" FT |
| HULL LENGTH ISO | 21.21 M | 69' 7" FT |
| BEAM | 5.72 M | 18' 9" FT |
| DRAFT | 1.5 M | 4' 11" FT |
| DRY WEIGHT | 43,000 KG | 94,800 LBS |
| FUEL CAPACITY | 6,300 L | 1,664 US GAL |
| WATER CAPACITY | 1,400 L | 370 US GAL |
| HOLDING TANK CAPACITY | 400 L | 105 US GAL |
| SLEEPING CABINS | 4 STANDARD | |
| SLEEPING CAPACITY | 8 STANDARD | |
| ENGINES (STANDARD) | 2 x VOLVO D13 - 1000 MHP - ZF | |
| GENERATOR | CUMMINS - ONAN 22 kW 50Hz | |







M64

DEFINITION OF AN ICON

The M64 pays homage to tradition while forging a new direction for the future. Powerful contours with a contemporary impression, yet tastefully understated, the M64 is unmistakably Maritimo.

Form and function have rarely combined to such stunning effect.

EFFORTLESS GRACE

Maritimo's race proven shaft drive and hull design technology ensures superior fuel consumption for long range high speed blue water cruising. The perfect example of where innovative engineering and design efficiency combine to deliver the ultimate performer.









CRAFTED IN TRADITION

The capably honed skill and scrupulous eye of master craftspeople is what sets Maritimo apart. From precise cuts of cabinetry to careful threads of hand stitched upholstery, our team are masters of their craft, and ensure excellence at every step.

The intrinsic quality they bring, are the foundation, the soul that breathes life into every motor yacht.



PASSION IN EVERY DETAIL

Beneath the inspiring surface of the Maritimo M64 is an unparalleled attention to detail, steeped in a long history of hand-made luxury and bespoke craftsmanship.

With a vast range of combinations of layouts, materials, colours and finishes available, every cabin aboard the M64 is special and each is the product of our craftspeople absolute dedication to perfection.







M64 SPECIFICATIONS

| | | |
|------------------------------|-----------------------------|--------------|
| LENGTH OVERALL | 19.51 M | 64' FT |
| HULL LENGTH ISO | 19.11 M | 62' 9" FT |
| BEAM | 5.72 M | 18' 9" FT |
| DRAFT | 1.415 M | 4' 8" FT |
| DRY WEIGHT | 39,000 KG | 86,000 LBS |
| FUEL CAPACITY | 5,600 L | 1,479 US GAL |
| WATER CAPACITY | 750 L | 198 US GAL |
| HOLDING TANK CAPACITY | 300 L | 79 US GAL |
| SLEEPING CABINS | 3 STANDARD | 4 OPTIONAL |
| SLEEPING CAPACITY | 6 STANDARD | |
| ENGINES (STANDARD) | 2 x VOLVO D13 - 900 MHP | |
| GENERATOR | CUMMINS - ONAN 17.5 kW 50Hz | |







M59

BROADEN YOUR HORIZON

From every angle, the M59 is conceived to portray beauty. Exquisitely balanced, the flowing curves and purposeful lines create an uncompromising aura, an instinctual glimpse to its ocean going abilities

A NEW DIMENSION IN SPACE & LUXURY

With refined power and peerless characteristics, the wider beam ensures plenty of space – beautifully balanced, with optimised proportions.









DESIGNED FOR THE JOURNEY

Step aboard where elegant simplicity and luxurious finishes await. With a beautifully appointed aft galley equipped with Miele appliances you'll want for nothing more when entertaining or during long stays abroad.

LUXURY ON ANOTHER LEVEL

We take fresh approach to luxury, creating beautifully finished interior spaces that offer a timeless elegance for relaxed on water living.

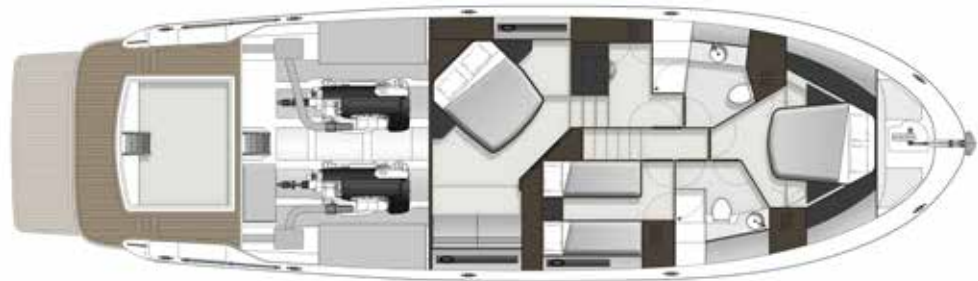






M59 SPECIFICATIONS

| | | |
|------------------------------|-----------------------------|--------------|
| LENGTH OVERALL | 18.07 M | 59'3 FT |
| HULL LENGTH ISO | 17.72 M | 58'2 FT |
| BEAM | 5.46 M | 17' 11" FT |
| DRAFT | 1.3 M | 4'3 FT |
| DRY WEIGHT | 29,000 KG | 63,930 LBS |
| FUEL CAPACITY | 4,500 L | 1,188 US GAL |
| WATER CAPACITY | 900 L | 237 US GAL |
| HOLDING TANK CAPACITY | 300 L | 79 US GAL |
| SLEEPING CABINS | 3 STANDARD | |
| SLEEPING CAPACITY | 6 STANDARD | 8 OPTIONED |
| ENGINES (STANDARD) | 2 x VOLVO D13 - 800 MHP TD | |
| GENERATOR | CUMMINS - ONAN 17.5 kW 50Hz | |







M55

REDEFINING THE CLASS WE CREATED

The M55 is the Maritimo you've been waiting for. It is the distinct new standard for an all-new generation of long range motor yachts. Pioneering engineering and hydrodynamics elude the waves, to generate the most exceptional ocean going stability, comfort and performance.





UNLEASH THE ADVENTURE

Underpinned by innovative new deck spaces, the M55 untaps an array of adventuring and entertainment possibilities and sets the extraordinary new standard for all long range motor yachts that follow.

OPEN AIR THEATRE

As soon as you step aboard the new M55 you will appreciate the Maritimo difference and you will be immediately captivated by its space – easily accommodating your family in style and comfort









A SKY LOUNGE ON AN ENTIRELY NEW LEVEL

The 'sky lounge' has truly maximised the motor yacht's beam and space. In addition to Maritimo's renowned climate-controlled fully enclosed flybridge and internal staircase, enjoy two dedicated flybridge lounging areas and a large aft flybridge deck with a full hardtop and optional roll-down clears.

BEAUTY BENEATH

Below deck free-flowing spaces utilise the hull's volume, maximising height and minimising the number of steps. Three spacious staterooms and two ensuites are on offer, with full-beam king master stateroom, offset queen forward stateroom, and twin single starboard guest room.

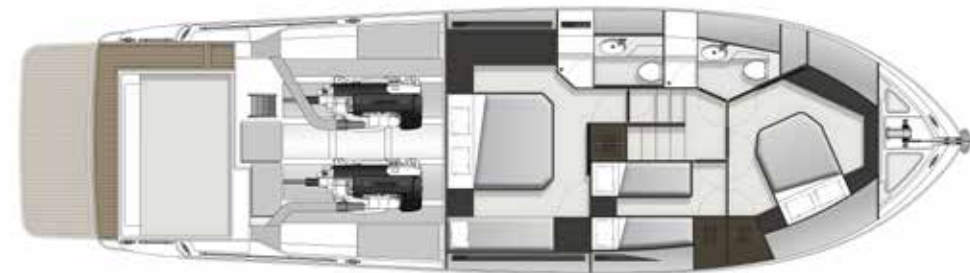
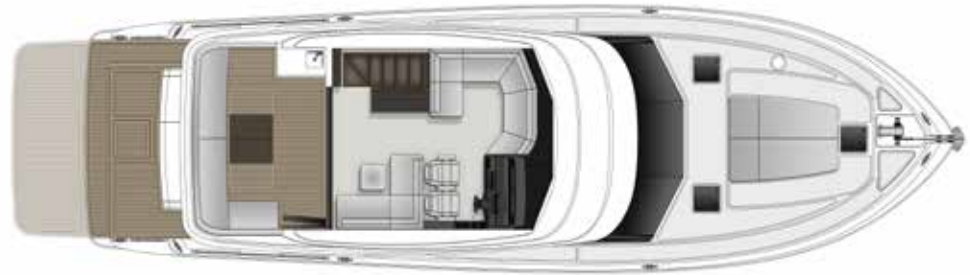






M55 SPECIFICATIONS

| | | |
|------------------------------|-----------------------------|--------------|
| LENGTH OVERALL | 17.27 M | 56'8 FT |
| HULL LENGTH ISO | 17.12 M | 56'2 FT |
| BEAM | 5.23 M | 17' 2" FT |
| DRAFT | 1.4 M | 4'6 FT |
| DRY WEIGHT | 27,000 KG | 59,525 LBS |
| FUEL CAPACITY | 4,550 L | 1,200 US GAL |
| WATER CAPACITY | 750 L | 198 US GAL |
| HOLDING TANK CAPACITY | 300 L | 79 US GAL |
| SLEEPING CABINS | 3 STANDARD | |
| SLEEPING CAPACITY | 6 STANDARD | |
| ENGINES (STANDARD) | 2 x VOLVO D11 - 670 MHP | |
| GENERATOR | CUMMINS - ONAN 17.5 KW 50Hz | |







M51

WHERE THE JOURNEY BEGINS

Spacious, innovative, efficient design. The Maritimo M51 is the perfect blend of size and volume, the Australian built boat that sets the international standard for flybridge motor yachts in the 50 - 60-foot category

PRESENCE AND POISE

Inspired by the lessons learned to create a class-leading, enduring line of blue water motor yachts for tough Australian conditions. Easy to handle, luxurious to live aboard, it opens the door to both Maritimo's proven pedigree and the world. Standing alone as the only true long-range luxury motor yacht of its size









ENJOY THE EXTRAORDINARY ON EVERY LEVEL

As soon as you take the M51 out on the water you appreciate the Maritimo difference. A fully enclosed climate-controlled flybridge sky lounge with internal staircase access & well-appointed accommodation spaces provides the essential comfort needed for long-range cruising and passage making.





M51 SPECIFICATIONS

| | | |
|------------------------------|---------------------------|------------|
| LENGTH OVERALL | 16.19 M | 53' 1" FT |
| HULL LENGTH ISO | 15.92 M | 52' 3" FT |
| BEAM | 5.06 M | 16' 7" FT |
| DRAFT | 1.30 M | 4' 3" FT |
| DRY WEIGHT | 21,000 KG | 46,300 LBS |
| FUEL CAPACITY | 3,100 L | 818 US GAL |
| WATER CAPACITY | 500 L | 132 US GAL |
| HOLDING TANK CAPACITY | 200 L | 53 US GAL |
| SLEEPING CABINS | 3 STANDARD | |
| SLEEPING CAPACITY | 5 STANDARD | 8 OPTIONED |
| ENGINES (STANDARD) | 2 x VOLVO D11 - 670 MHP | |
| GENERATOR | CUMMINS - ONAN 11 KW 50Kz | |



M-SERIES COMPARISON

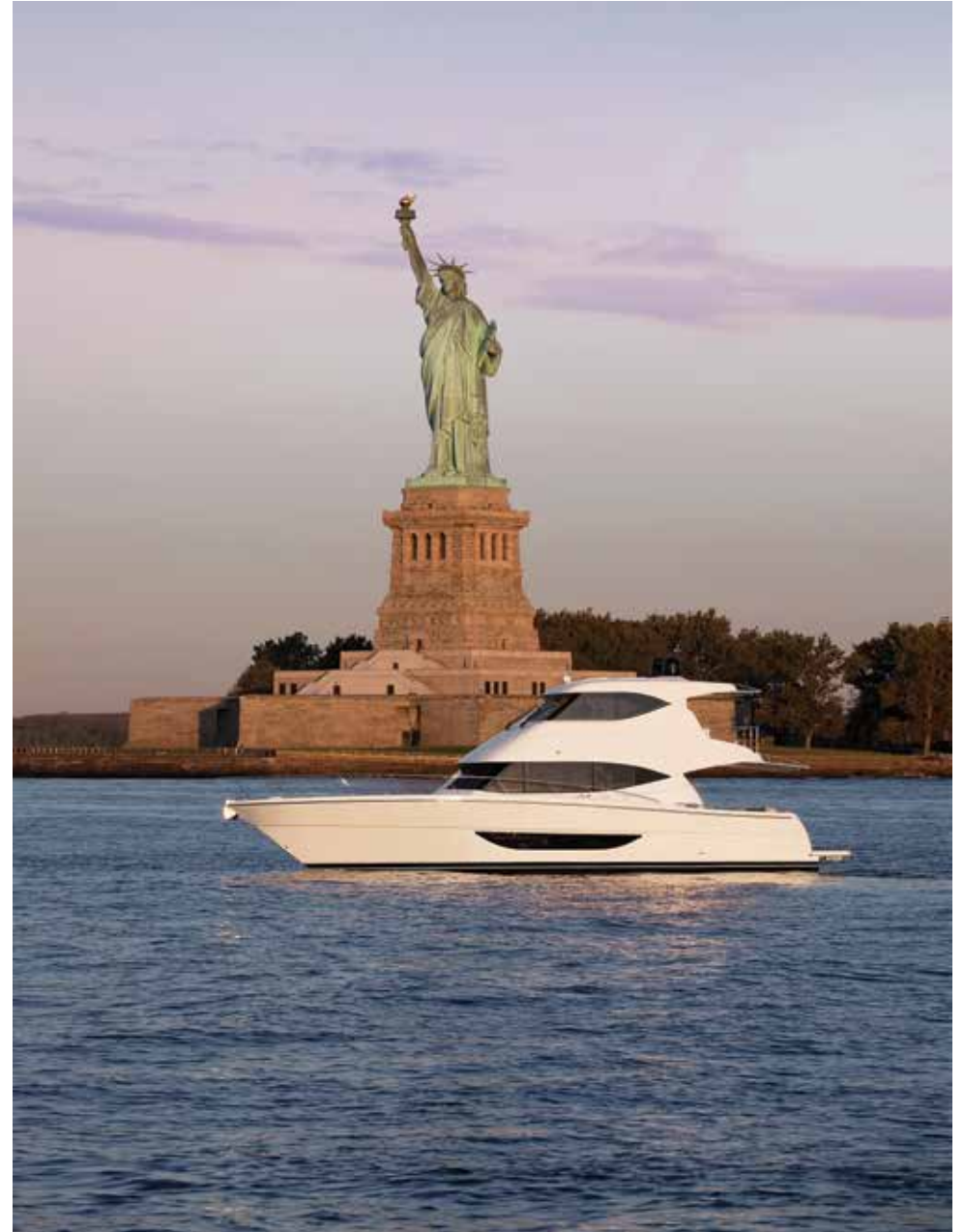
| | M70 | | M64 | | M59 | |
|------------------------------|-------------------------------|--------------|-------------------------|--------------|-----------------------------|--------------|
| LENGTH OVERALL | 21.51 M | 70' 7" FT | 19.51 M | 64' FT | 18.07 M | 59'3 FT |
| HULL LENGTH ISO | 21.21 M | 69' 7" FT | 19.11 M | 62' 9" FT | 17.72 M | 58'2 FT |
| BEAM | 5.72 M | 18' 9" FT | 5.72 M | 18' 9" FT | 5.46 M | 17' 11" FT |
| DRAFT | 1.5 M | 4' 11" FT | 1.415 M | 4' 8" FT | 1.3 M | 4'3 FT |
| DRY WEIGHT | 43,000 KG | 94,800 LBS | 39,000 KG | 86,000 LBS | 29,000 KG | 63,930 LBS |
| FUEL CAPACITY | 6,300 L | 1,664 US GAL | 5,600 L | 1,479 US GAL | 4,500 L | 1,188 US GAL |
| WATER CAPACITY | 1,400 L | 370 US GAL | 750 L | 198 US GAL | 900 L | 237 US GAL |
| HOLDING TANK CAPACITY | 400 L | 105 US GAL | 300 L | 79 US GAL | 300 L | 79 US GAL |
| SLEEPING CABINS | 4 STANDARD | | 3 STANDARD 4 OPTIONAL | | 3 STANDARD | |
| SLEEPING CAPACITY | 8 STANDARD | | 6 STANDARD 8 OPTIONAL | | 6 STANDARD 8 OPTIONAL | |
| ENGINES (STANDARD) | 2 x VOLVO D13 - 1000 MHP - ZF | | 2 x VOLVO D13 - 900 MHP | | 2 x VOLVO D13 - 800 MHP | |
| GENERATOR | CUMMINS - ONAN 22 kW 50Hz | | CUMMINS - ONAN 17.5 kW | | CUMMINS - ONAN 17.5 kW 50Hz | |

M55

| | |
|-----------------------------|--------------|
| 17.27 M | 56' 8" FT |
| 17.12 M | 56' 2" FT |
| 5.23 M | 17' 2" FT |
| 1.40 M | 4' 6" FT |
| 27,000 KG | 59,525 LBS |
| 4,550 L | 1,200 US GAL |
| 750 L | 198 US GAL |
| 300 L | 79 US GAL |
| 3 STANDARD | |
| 6 STANDARD | |
| 2 x VOLVO D11 - 670 MHP | |
| CUMMINS - ONAN 17.5 kW 50Hz | |

M51

| | |
|---------------------------|------------|
| 16.19 M | 53' 1" FT |
| 15.92 M | 52' 3" FT |
| 5.06 M | 16' 7" FT |
| 1.30 M | 4' 3" FT |
| 21,000 KG | 46,300 LBS |
| 3,100 L | 818 US GAL |
| 500 L | 132 US GAL |
| 200 L | 53 US GAL |
| 3 STANDARD | |
| 5 STANDARD 7 OPTIONAL | |
| 2 x VOLVO D11 - 670 MHP | |
| CUMMINS - ONAN 11 kW 50Kz | |



MARITIMO ONE

Maritimo One is a dedicated division within Maritimo providing customers with the opportunity of one-on-one design and development time with Maritimo.

This personalised service enables customers to work with Maritimo to tailor a vessel to their specific needs or environment resulting in a one of kind vessel unlike any other.

Maritimo One. As Individual as you are.

ONE





Martimo

THE WORLD OF MARITIMO



GLOBAL SUPPORT

Our global yacht consultants are available on demand to ensure you are completely comfortable with the operations of your Maritimo, providing on-site service wherever you are, supplemented by service centres around the world. If your support needs go beyond operations, we've got you covered there, too. Our team is more than happy to provide assistance that enhances your on-water enjoyment for years to come



PROTECTING YOUR INVESTMENT

You can be assured that every new Maritimo leaving our facilities is backed by a dedicated factory warranty that reinforces our commitment to manufacturing excellence.

With dedicated warranty and technical support staff around the globe you can ensure your Maritimo receives the best service possible for years to come .

This also enables us to have continual R&D and manufacturing reviews of each model so we can continue to build the best luxury motor yachts possible



MARITIMO MUSTERS & EVENTS

As a proud Maritimo owner, become part of our story at one of our Maritimo Musters held around the world. Meet new friends, speak to our team about how each and every model is built, while your driving skills are put to the test.

Extend beyond the pleasurable days out on the water with our range of exclusive benefits. From special VIP events across the world, the chance to be part of product development and 'experience days' with our brand partners, there's plenty to be involved in.



GLOBAL BOAT SHOWS

Experiencing a Maritimo has never been easier with our dedication to an international boat show schedule across Australia, the Americas and Europe. This is an opportunity for you to be informed and entertained on Maritimo's latest models. Visit our website and social channels to find a boat show near you.

VIRTUAL BOAT SHOW

Maritimo's virtual boat show and event platform brings you into the exciting world of Maritimo from the comfort of your own home with new model launches, interactive walk throughs, Q&A's and more.



MARITIMO COLLECTION

Your motoryacht is just the beginning. The latest Maritimo Collection is now available for you to discover.



CONNECT WITH MARITIMO

Maritimo's digital world offers you the opportunity to connect with us. Our website, Facebook, Instagram, Twitter, LinkedIn and YouTube channels are filled with the latest Maritimo news, events and models, plus insights into the factory and offshore racing.

maritimo.com.au | [@maritimomotoryachts](https://www.instagram.com/maritimomotoryachts)



MARITIMO.COM.AU

Maritimo[®]

Maritimo Offshore Pty Ltd is constantly seeking ways to improve the specifications, designs and production of its motoryachts and enhancements take place continually. Whilst every effort is made to ensure up to date literature, this brochure should not be regarded as an infallible guide to current specifications. Always check with your authorised Maritimo consultant to ensure you have the latest specifications, options and pricing. We reserve the right to change specifications, fittings, inventory and prices without notice.

© Copyright 2020 Maritimo (MFG) International Pty Ltd